



PRODUCT OVERVIEW

Designed for commercial use and with multiple functions, E11 EV charger provides up to 23kW superfast charging via dual charging guns. The EV charger is compatible with POS interface, enabling users to pay for charging by credit card. Supports OCPP operation platform, RFID or credit card swiping for charging. Adjustable charging power reduces energy consumption.

FEATURES

- Designed for commercial use
- 4G/WIFI/LAN multiple networking
- Supports OCPP1.6
- Supports OTA remote upgrade
- Charging by swiping credit card or RFID card
- Double charging guns, supporting dual EV charging
- Type1 J1772 charging port
- CCID20 ground fault protection
- Level 1 energy metering
- ETL & Energy Star certified

APPLICATIONS

- Retail shopping centers
- Corporate office complexes
- C-Stores & gas stations
- Hotels & resorts
- Multi-family residential housing
- Restaurants
- Entertainment venues
- Stadiums and sports arenas
- Fleets
- Customer loyalty programs
- Public transportation hubs

Product Description

PART#	DESCRIPTION	NOMINAL VOLTAGE	OUTPUT POWER	CHARGING INTERFACE	WEIGHT
EV-E11-48A-01	Single Gun EV Charger	208VAC/250VAC	5.76kW-11.52kW	Type 1 J1772	≤35Kg
EV-E11-80A-01	Single Gun EV Charger	208VAC/250VAC	11.52kW-19.2kW	Type 1 J1772	≤40Kg
EV-E11-96A-01	Dual Gun EV Charger	208VAC/250VAC	11.5kW-20.04kW	Type 1 J1772	≤40Kg

Specifications

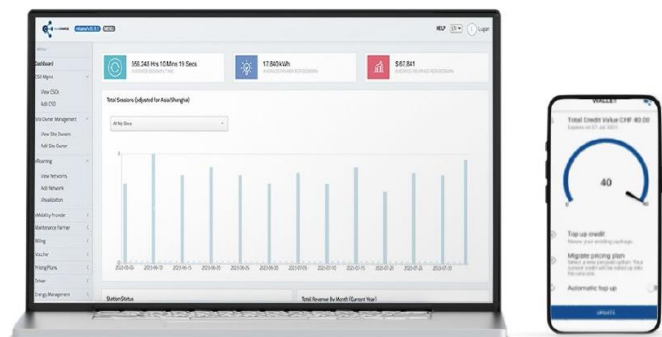
MODEL#	EV-E11-48A-01	EV-E11-80A-01	EV-E11-96A-01
POWER SPECIFICATIONS			
Standby Power	<5W Standby		
Output Power(kW)	5.76kW/7.68kW 9.6kW/11.52kW	11.52kW/15.36kW 17.28kW/19.2kW	11.5kW/15.36kW 19.2kW/20.04kW
Output Amperage(A)	24A/32A/40A/48A	48A/64A/72A/80A	48A/64A/80A/96A
Circuit Breaker Options(A)	27A/36A/45A/53A	53A/71A/80A/88A	53A/71A/88A/106A
Input/Output Nominal Voltage	208VAC/250VAC		
Input/Output Voltage Range	190VAC/265VAC		
Input/Output Frequency	50/60Hz		
Input Wiring Type	Hardwired		
Input Wiring Scheme	L1, L2, PE		
Power Measurement Accuracy	Embedded meter with a 1% accuracy at the nominal input		
Surge Protection	Up to 6kV at 3000A		
FUNCTIONAL SPECIFICATIONS			
Charge Connector Type	SAE J1772		
Charge Cable Length	18 feet		
Status Indicator	LCD Display		
User Interface	None		
Access Control	Contactless Reader: RFID Card ISO/IEC 14443A/Credit Card/APP		
NETWORK SPECIFICATIONS			
Network Interface	4G & LAN & WIFI		
Communication	OCPP1.6j		
OPERATIONAL SPECIFICATIONS			
Ground Fault Detection	CCID20, 20mA per UL2231, Automatic Reset Feature		
Ground Monitor	Ground Monitor per UL2231		
Safety Compliance	UL2594/UL2231-1/UL2231-2		
Protection	OVP, UVP, OCP, OTP		
Energy Star Certified	Yes		
OPERATIONAL SPECIFICATIONS			
Enclosure Rating	IK10		
Waterproof	NEMA 3S		
Operating Temperature	-30°C to +55°C		
Storage Temperature	-40°C to +70°C		
Operating Humidity	95%		
Altitude	≥2000m		
Charger Dimensions	1526*451*350(mm)		
Charger Weight	≤35Kg	≤40Kg	≤40Kg

Charging Management



The charging management platform provides enterprises or organizations with the ability to deploy and self-manage electric vehicle charging networks for workplaces, fleets, commercial and residential locations.

- Automatic control of charging stations
- Set up charging stations for public use
- Dynamic pricing allows operators to set different electricity unit prices according to different time periods
- Add or remove charging points and users intelligently
- Whole report on all charging stations
- Intelligent charging function, reduces charging cost
- Set different pricing for individuals or groups
- Charging reservation. Allow users to choose the appropriate charging time
- Supports map navigation by APP, so that users can find charging stations anytime and anywhere



Reserve charge point
Book charge points at a time that suits you the best!

Reserve

Easy payment for your employees



Product Dimensions

