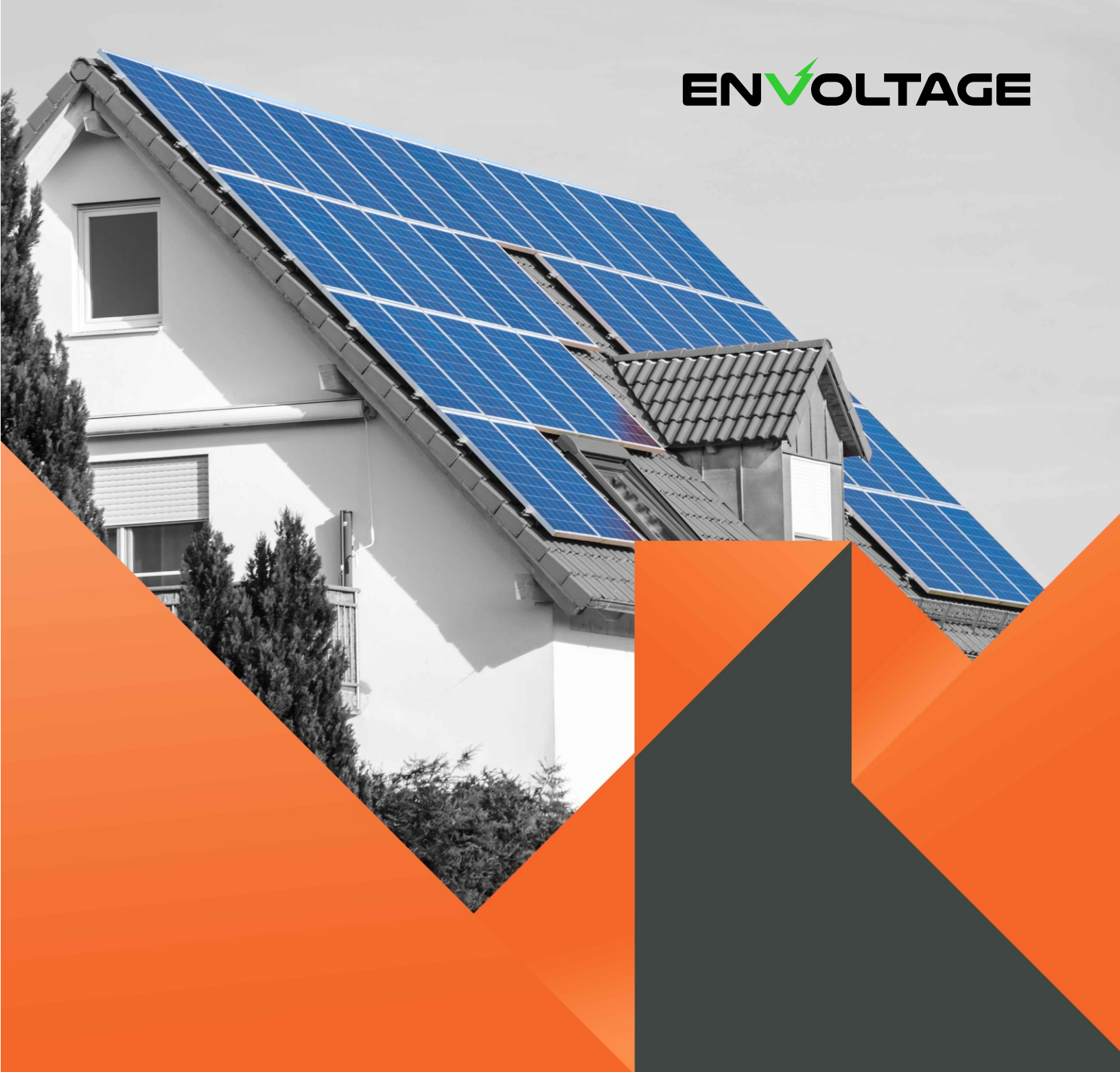


ENVOLTAGE



POWERCUBE™

Datasheets



ON-GRID

Residential On-Grid
Photovoltaic System Kits



ON-GRID RESIDENTIAL

3kW / 4kW / 5kW / 6kW / 7kW / 8kW



Product Description

These innovative residential Solar PV Kits are the most cost effective and easy PV solution available for home use. They are ideally suited for any household that is looking to reduce energy costs using an efficient and clean energy system.



Switch on and off

Our grid-tied systems allow homeowners to get power from either their solar electric system or the utility grid, switching seamlessly between the grid-tied PV system and the grid.



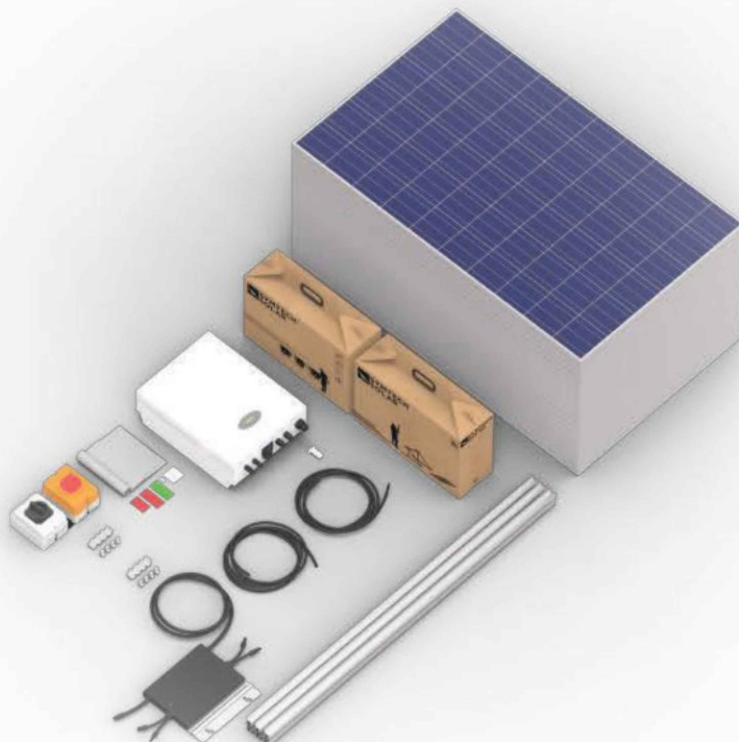
Sell back your power

When your grid-tied system is producing more power than your home is consuming, the excess power can often be sold back to the utility in a practice known as net metering.



Use the grid at night

When your system is not producing sufficient power or during non-daylight hours your home can draw power from the utility grid.



What's in the Box

- Solar modules
- Solar on-grid inverter
- Custom roof mounting system
- PV wiring harnesses
- DC and AC disconnects
- Wire management kit
- Safety label kit
- Single and three-line electrical and mechanical schematics
- Microinverter (available for Mini 500W)

Residential PV Systems Ready to Install

Configured in a 'plug n play' solution, our On-Grid residential PV systems allow installers to safely connect them to the AC main service panel of any household anywhere in the world. Owners are given the option to either auto consume the power generated from their PV system or sell excess energy back to their local utility provider. These systems are offered with mounting systems for multiple roof types and configurations which offers stability and aesthetics to any rooftop.

Product Benefits

- Generate your own electricity from home and reduce your electric bill
- Increase the value of your home
- Hedge yourself against future utility increases
- Reduce your carbon footprint

Common Applications

- Homes
- Villas
- Out buildings
- Garages
- Apartments



Residential On-Grid PV Kits

SYSTEM SIZE	3KW	4KW	5KW	6KW	7KW	8KW
PRODUCT MODEL	PCR-3KW	PCR-4KW	PCR-5KW	PCR-6KW	PCR-8KW	PCR-10KW
PV System size Nominal(Wp)	3000W	4500W	5250W	6000W	7500W	8250W

PV MODULE SPECIFICATION (MONO)

Panel Model	OP375M60-P2
Power(W)	375
Vmp(V)	34.4
Voc(V)	41.6
Isc(A)	11.45
Imp(A)	10.89
Dimensions(L x W x H)(mm)	1763x1046x30mm
PV module weight(kg)	20
Certifications	VDE CE CEC ETL INMETRO

INVERTER SPECIFICATIONS (600VDC)

Inverter Size(kw)	3	4	5	6	8	10
Max DC Power(W)	4500	6300	6800	7500	8500	9600
Max DC Voltage(V)	600					
MPPT Voltage range(V)	70-580			100-530		
No.of MPPT'S	1	2				
Max AC Power(VA)	3300	4620	5000	6000	7000	8000
Max Output Current(A)	13	18.3	21.7	28.7	33.5	38.3
AC Nom.Voltage/Voltage Range(V)	220/230/240(180-280)					
AC Grid Frequency range(Hz)	50/60					
Number of phases	1					
Dimensions(L x W x H)(mm)	341.5*430*143			534*419*201		
Inverter weight(kg)	14.5			30		
Certifications	EN61000-6-2 EN61000-6-3 EN61000-3-2 VDE4105 EN50549 CEI0-21					

12/240VUL invertersalsoavailable upon request

BOS

#DC Isolator 1200V	1	2	2	2	2	2
#AC Isolator	1	1	1	1	1	1
#AC Breaker	1	1	1	1	1	1
*PV Wire Harness.4mm(meters)	1	1	2	2	2	2
*Ground Wire.4mm(meters)	30	40	50	60	70	80
Battery Cables	N/A					

* Extra wire is available upon request

SYSTEM LAYOUT

# of Modules	8/	12	14	16	20	22
# of inverters	1					
PV Layout options	Landscape or Portrait					
PV Array Surface Area(m2)	14.66	21.6	25.2	28.8	36	39.6
PV Array Weight(kg)	160	240	280	320	400	440
PV Module Configuration	No. of PV Modules/String	8	12	7	8	10
	Total Strings	1	1	2	2	2
	String Voc	332.8	499.2	291.2	332.8	416
	String Vmp	275.2	412.8	240.8	275.2	344
	String Imp	10.89				

PRODUCTION ESTIMATES(KWh)

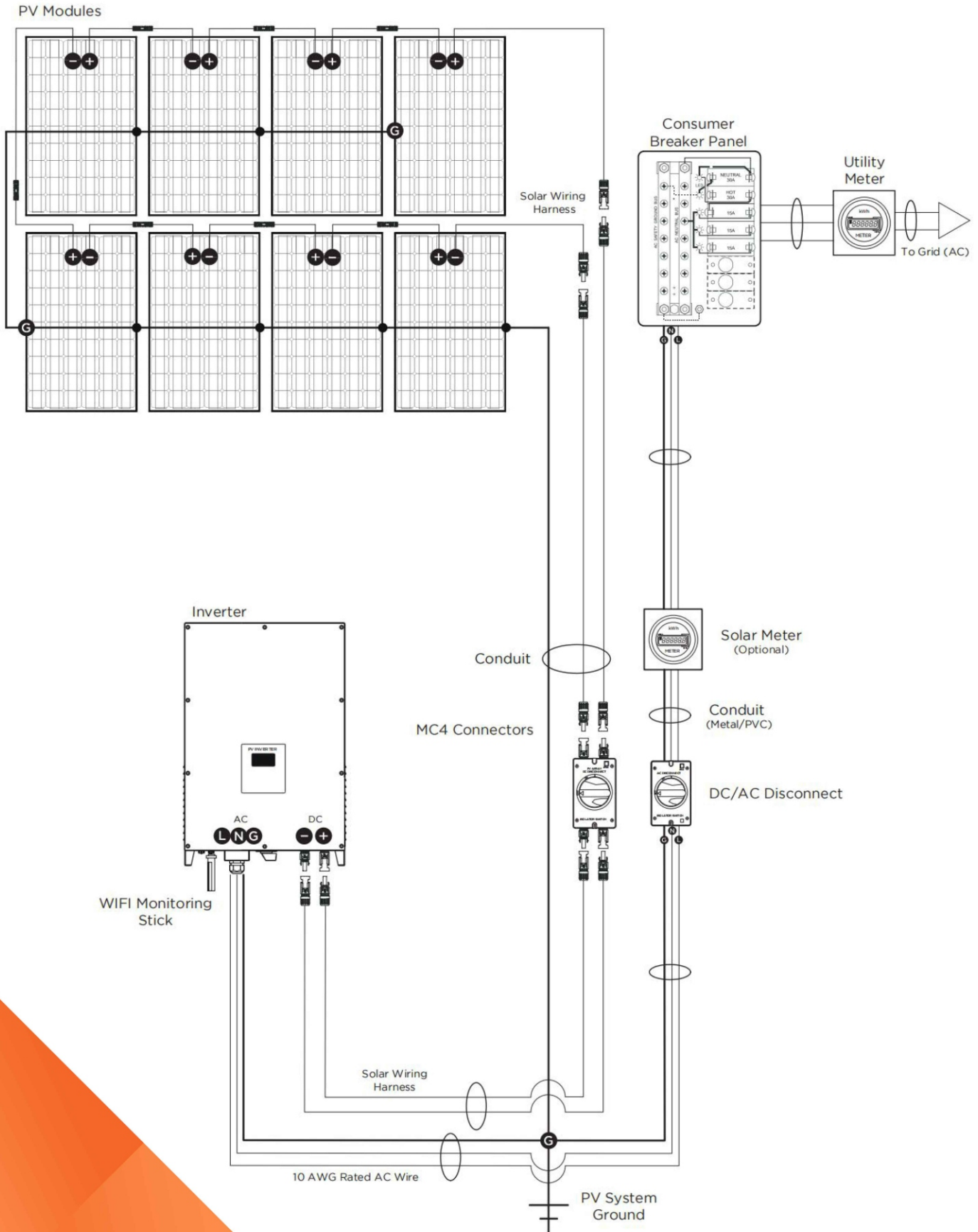
*Projected yearly output at 1100GHI/year	2805	4207	4908	5610	7012	7713
*Projected yearly output at 1460GHI/year	3723	5584	6515	7446	9307	10238
*Projected yearly output at 1825GHI/year	4653	6980	8144	9307	11634	12797

* Based on 0.85% system derating(formula=DC Power x peak sunshine hour/year x derate factor)(GHI=Global Horizontal radiance)

SYSTEM OPTIONS

Wifi Monitor	Wifi or GPRS
PV System Color	Silver or Full Black
Mounting System Types	Metal Roof AsphT Shingle, Tile roof, Flat Concrete
Battery Bank	TBD

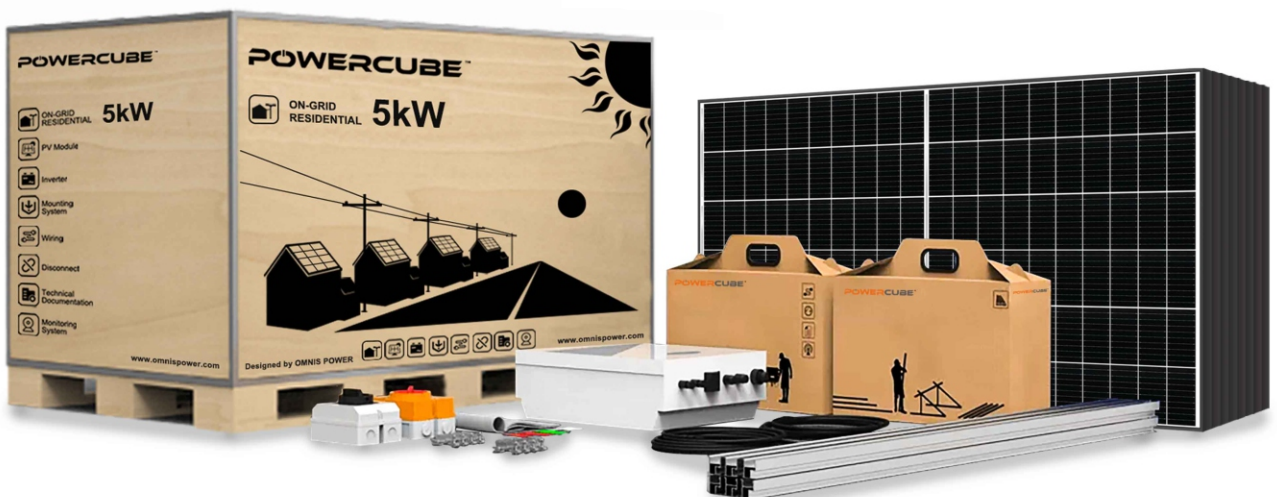
Residential On-Grid Example Layout (3kW)





The all-in-one Box Solution

The difference is clear, get better results with our all in a box packaging solution. Our innovative heavy duty ISPM15 compliant care design not only protects the contents during international shipping but also ensures that the solar kits arrive to their destination site undamaged and ready for installation. Our BOS toolboxes are included in all our solar kits and designed with the installer in mind.



Packaging Specs

Designed to be warehouse friendly for distribution centers and local logistics companies, our kits are easily stacked, inventoried, and consolidated.

3kW

1.8 x 0.45 x 1
1 kit per pallet

38 kits per 20'
76 kits per 40'



4kW

1.8 x 0.55 x 1
1 kit per pallet

26 kits per 20'
52 kits per 40'



5kW

1.8 x 0.70 x 1
1 kit per pallet

22 kits per 20'
44 kits per 40'



6kW

1.8 x 0.95 x 1
1 kit per pallet

12 kits per 20'
24 kits per 40'



7kW

1.8 x 1.1 x 1
1 kit per pallet

12 kits per 20'
24 kits per 40'



8kW

1.8 x 1.1 x 1
2 pallets per kit

6 kits per 20'
12 kits per 40'

